

SUNSET AVENUE

THE HUGH PARKS PLACE ASHEBORO, N.C.



J. M. Nealey

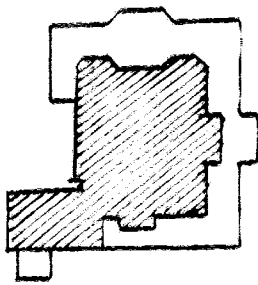
S. 4°32' W 385.6

②

N. 4°32' E 385.6

J. S. Lewis

To
Hugh Parks
Book 207. 525



①

S. 84°44' E 120'

N. 4°25' E 385.6

N. 4°25' E 589.9

L. S. Lewis

J. M. Nealey

180

③

N. 4°32' E 188.1

④

N. 4°32' E 196.2

⑤

N. 4°32' E 204.3

L. S. Lewis

100.35

60.45

60.45

59.10

DIXON STREET

June 15, 1939
R. D. Treadon C. S.